



Headquarters

Unitronics (1989) (R"G) Ltd.

Unitronics Building, Airport City

P.O.B. 300, Ben Gurion Airport, Israel 70100

Tel: + 972 (3) 977 8888 Fax: + 972 (3) 977 8877

Replacing a V130 Display

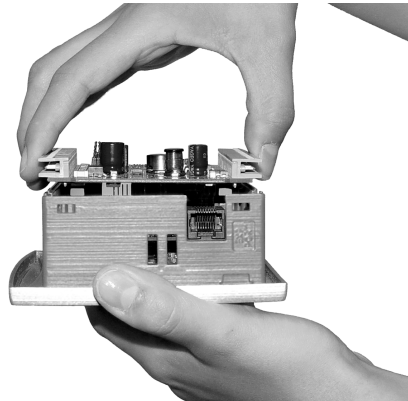


Before performing these actions, touch a grounded object to discharge any electrostatic charge.

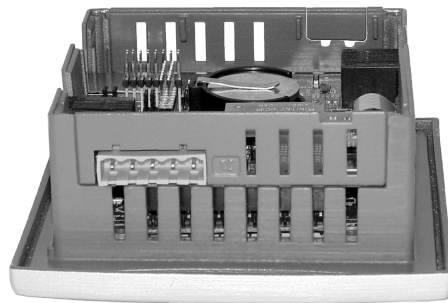
Avoid touching the PCB board directly. Hold the PCB board by its connectors.

Opening the Controller

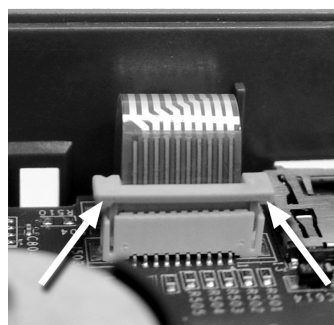
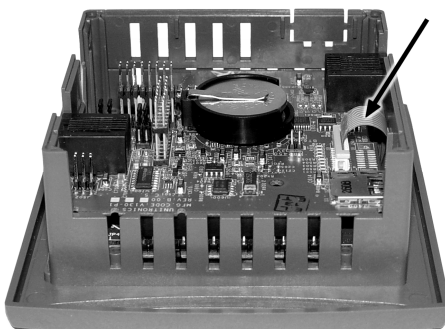
1. Turn off the power supply, disconnect, and dismantle the controller.
2. The back cover of the controller comprises 4 screws, located in the corners. Remove the screws, and pull off the back cover.
3. Hold the I/O PCB board by its top and bottom connectors and steadily pull the board off.



4. Remove the plastic tabs marked X and Y.



5. Remove the keypad ribbon cable shown in the next figure. Press the sides of the cable connector and pull it slightly upwards; this releases the cable. Pull the cable from the connector.



**Headquarters**

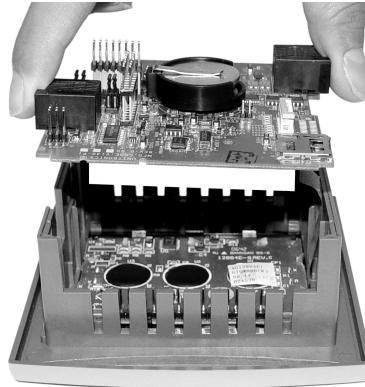
Unitronics (1989) (R"G) Ltd.

Unitronics Building, Airport City

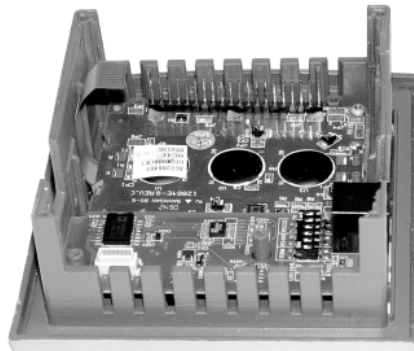
P.O.B. 300, Ben Gurion Airport, Israel 70100

Tel: + 972 (3) 977 8888 Fax: + 972 (3) 977 8877

6. Locate the two screws that fasten the CPU board to the controller and remove them.
7. Hold the main board by Port 1 and by the I/O expansion port, and pull it out of



8. Locate the two screws that fasten the LCD display to the plastic panel and remove them.



9. Remove the LCD display.

Closing the Controller

1. Replace the new LCD display in the correct location, including the fastening screws.
2. Replace the CPU board, including the fastening screws.
3. Replace Keypad ribbon cable, and verify if the cable connectors are locked.
4. Replace the plastic tabs marked X and Y in the correct location.
5. Replace the I/O board.
6. Close the controller by snapping the plastic cover back in its place. If the card is placed correctly, the cover will snap on easily.
7. Replace the screws in the corners of the back cover.